



CONTACT



The Official Newsletter of the Theatre Arts Guild

Canada's Oldest Continually Operating Community Theatre

 @TAGHalifax
 @tagtheatrehalifax
 @TAGTheatre
 info@tagtheatre.com



The Pond Playhouse

6 Parkhill Rd. Halifax, NS.

www.tagtheatre.com

(902) 477-2663

MAY/JUNE 2024

UP NEXT AT TAG



PRESENTS

A SPRING FESTIVAL IN THREE ACTS

ACT I	ACT II	ACT III
MAY 24 & 25	MAY 26	MAY 31 & JUNE 1
LIVE MUSIC & DANCING	JOLLIMORE DAY	LOCAL TALENT SHOWCASE



THE POND PLAYHOUSE
 6 PARKHILL ROAD
 BUY YOUR TICKETS AT
 WWW.TAGTHEATRE.COM
 @TAGTHEATREHALIFAX
 /TAGHALIFAX

Get ready to party with the Theatre Arts Guild as they kick off their first-ever Spring Festival at the iconic Pond Playhouse!

Mark your calendars for two weekends packed with entertainment, featuring local talents from Halifax:

May 24-26/24
May 31-June 1/24

The fun begins with live music from 'The Purcells Cove String Band' and 'The Retrobeats' on the first weekend. On Sunday, May 26, dive into the 2nd annual Jollimore Day community festival, offering theatre tours, a plant swap, kids' activities, delicious treats, and live music.

The second weekend showcases performances by the Maritime Conservatory of Performing Arts World Music Group, Wayne MacIntyre and Maria Alley, JL Ilsley High School's "Mean Girls" musical, and more.

All proceeds go towards supporting TAG's mission to celebrate the arts in Halifax. Let's make some unforgettable memories together!

MORE DETAILS PAGE TWO

A Spring Festival in Three Acts

Come out to celebrate Spring and the joy of local talent
at the Pond Playhouse!

Two Weekends Only

May 24, 25 & 26, 2024 and May 31 & June 1, 2024

Tickets on Sale Now

Members: \$18

Non-Members: \$20

ACT ONE

Friday & Saturday, May 24-25/24

7:30 pm Fri May 24

Purcell's Cove String Band

Live music with a dance floor
Great harmonies, fabulous picking, a stand-up bass
and sweet tunes + 50/50 Draw!

7:30 pm Sat May 25

The Retrobeats

Great covers from the 60's 70's and 2020's!!! A six-piece
band including Louise Renault, that likes to rock and can
also make you swoon to sweet ballads +50/50 Draw!

SOLD OUT

ACT TWO

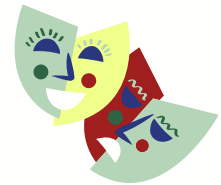
Sunday, May 26/24

2nd Annual Jollimore Days

(FREE admission all day)

1:00 to 3:00pm

3:00 pm Local live music with a dance floor! Limited capacity.
Community gathering at Pond Playhouse that celebrates our historic neighbourhood.
Tours of the theatre, Tartan Coffee Truck,
Maritime Sikh Society food stall, plant exchange, games for kids and more!
Also come and be part of an exciting announcement from
Halifax city councillors Pam Cuttle and Shawn Cleary



ACT THREE

Friday & Saturday, May 30 & June 1/24

7:30 pm Fri May 31

Celebration of Local Talent

Youth Improv, excerpts from Mean Girls the Musical,
live music from: the beloved duo Wayne and Maria,
the JL Ilsley String Group and the Parkhill Mob
+ 50/50 Draw!

7:30 pm Sat June 1

Celebration of Local Talent

Youth Improv, excerpts from Mean Girls the Musical,
live music from: the beloved duo Wayne and Maria,
the JL Ilsley String Group and the Parkhill Mob
+ 50/50 Draw!

Producers Louise Renault and Cheryl Theriault

PRESIDENT'S MESSAGE

HOW CAN IT BE MAY ALREADY?

It was extremely unfortunate that the cast and crew of *Murder Tonight* did not get to complete the full run of performances as originally planned. The decision to cancel shows is never an easy one, especially after everyone involved has worked so hard for many months, and tickets have been purchased. Sometimes these things are beyond anyone's control, but it is still a disappointment. We appreciate your understanding, and we thank all those who so generously donated to our recent fundraising campaign, which helped to offset the lost income as a result of the cancelled performances. The cast and crew are fully committed to finishing what they started this past March. The show will (eventually) go on!

We hope to see many of you during our next big event, which is TAG's Spring Festival in Three Acts. Special thanks to Louise Renault and Cheryl Theriault who are responsible for gathering all these amazing performers during the weekends of May 24-26 and May 31-June 1, and for all their efforts in preparing what I know will be a truly fun and unique experience at TAG. Don't forget to purchase your Membership before the close of the Spring Festival, as it will be extended to include the 2024-2025 season.

Speaking of next season...the details are being finalized and we are preparing to make the official announcement very soon. It is shaping up to be a very impressive year. The date of the Season Launch will be shared as soon as it has been confirmed. Enjoy the warmer spring weather. Stay safe. Stay healthy.

Rayna Smith-Camp
President

FEATURING IN NEWSLETTER

- *Up Next at TAG* (front page)
- *Spring Festival in Three Acts* (page two)
- *President's Message*
- *Thank You for your support*
- *Being a Volunteer*
- *TAG Online*
- *Announcement ~ Season 2024-2025 Opener*
- *Membership ~ added Benefit!*
- *TAG Executive Board*
- *More Exciting News*
- *Memories of... Murder Tonight and special announcement*
- *The History of TAG- 90 Years and Counting*



THANK YOU

To our recent donors:

TAG extends our heartfelt gratitude to those who generously supported our Make it Monthly and Seat Sale campaigns. Your contributions demonstrate your commitment to our mission of bringing quality theatre to our community, and we are truly grateful.

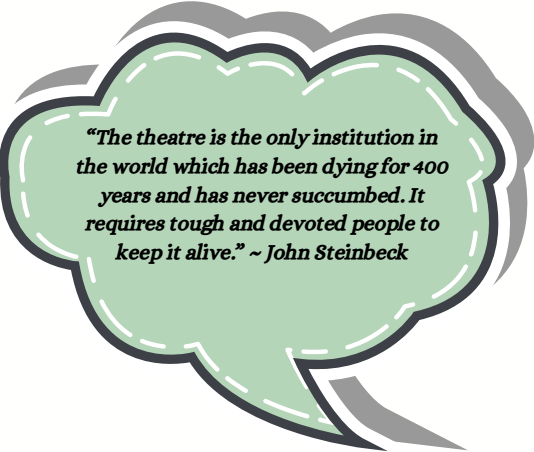
TAG has been working hard to rebuild our financial base following the challenges posed by the COVID-19 pandemic. While we had hoped that the relaxation of restrictions would allow us to regain our security, the unfortunate postponement of our final two planned productions for the season have presented a new obstacle. The loss of expected ticket income has placed a strain on our finances, but thanks to supporters like you, we remain determined to maintain our mortgage and debt-free status. Your ongoing support allows us to plan for the future with confidence and ensures that we can continue to enrich the lives of our community through the power of theatre.

Please know that your generosity does not go unnoticed. As a registered charity, TAG or CanadaHelps will issue you receipts for income tax purposes, and we are committed to being transparent and accountable for every dollar donated.

Once again, thank you for your generosity and commitment. Your partnership means the world to us, and we look forward to keeping you updated on the impact of your contributions.

Yours truly

Bill VanGorder, Fundraising Chair
Theatre Arts Guild



"The theatre is the only institution in the world which has been dying for 400 years and has never succumbed. It requires tough and devoted people to keep it alive." ~ John Steinbeck



Being a Volunteer at TAG

It takes dozens of volunteers with passion and dedication to ensure a successful theatre production. Explore the many volunteer roles open to you at TAG

<https://www.tagtheatre.com/VolunteerRoles.html>

TAG ONLINE

TAG Digital, The Theatre Arts Guild virtual stage, started as a response to the COVID-19 lockdowns in June 2020, in collaboration with The Telescope Theatre Project. Its aim is to share new, familiar, and obscure works of poetry, prose, and plays, and provide an educational, relaxing, and creative process for participants who desire to take part in a production, but are unable to commit to the demands of a live production. Since September 2020, they have released audio and video productions, made primarily available on YouTube.

The Telescope Theatre Project was a creative, collaborative cooperative of storytelling enthusiasts, with interests in poetry, prose, and plays. Formed in 2013 by Kaylon Fraser, Melinda Antle, and Joshua Law, their ultimate goal was to explore new, familiar, and lost works, and share them with artists and audiences. Following the amalgamation with TAG in 2021, the Project dissolved, but Telescope remains as a producer within TAG.

TAG Digital welcomes your submission of poetry, prose and plays

https://tagtheatre.com/tag_digital.html

Note: Submitted pieces must be either original work or fall within the public domain (70+ years after death of author)

Stream TAG's digital content for free!

STAY TUNED FOR UP AND COMING AUDIO PLAYS



We understand that everyone is eagerly anticipating the announcement of our upcoming season. Our team is diligently preparing to unveil the full lineup for the 2024-2025 season.

So to start:

We are delighted to announce that the season

finale from the previous season,

Great Kettle For The People

written by local playwright

Troy Ginter

will now be the season opener for 2024-2025.

Directed by Angela Butler

A love story sprouting from small-town daydreams and hearts brimming with good intentions.

It can freeze time, set the perfect mood, and soothe even the wildest of beasts within us. So, what makes the ultimate cup of tea? For those with a chance to savor such a magical drink,

would they go to the ends of the earth for it?

Stay tuned for
audition notices
and show dates.
Coming real soon!



Exclusive Benefits with a TAG Membership

Membership Has Its Benefits

Not only do members receive a discount on tickets, but a Theatre Arts Guild membership is also the ideal way to help your community theatre thrive while developing your own theatrical skills, interests, and making new friends. Now there is a **NEW BENEFIT** to membership - **EARLY ACCESS TO TICKET SALES!** Members can choose their performance dates and seats before tickets are available to the public.

Become a member today!

Memberships purchased between April 13th and the close of the Spring Festival will be extended to include the 2024-2025 TAG season.

<https://www.tagtheatre.com/membership.html>

TAG Executive Board 2023-2024



Rayna Smith-Camp, President
Vacant, Vice-President
Patrick Charron, Treasurer
Stephanie Demedeiros Ouedraogo, Secretary
Angela Butler, Executive Producer
Vacant, Artistic Director
Bill Barnaby, Technical Director
Bill VanGorder, Building Manager
Louise Renault & Cheryl Theriault, Volunteer Development
Valerie Dubois, Web Director
Lorne Abramson, Publicity and Marketing Director
Angela Butler, Newsletter Editor
Bill VanGorder, Fundraising Director
David Williams, Bar Manager
Valerie Dubois, Membership
TAG Costumes and Props Team
TAG Archives
Michele Moore - TAG Phone Line

More Exciting News!

OUR ANNUAL PANTOMIME IS BACK!

THE LITTLE MERMAID

by Wayne Miller



Director ~ Kimberly Charron

Auditions and Show Dates coming soon

***If you want to be a part of this
tail (tale)***

***Follow us at
tagtheatre.com***



MEMORIES OF...

Murder Tonight

Director~Nick Jupp

Producer~ Lorne Abramson

by Nick Jupp

Stage Manager~ Angela Butler

Assistant Stage Manager ~ Phillip Borg



Featuring:
Erin Niedermayer
Jocelyn Covert
Laura MacMillan
Calum MacLean
Rayna Smith-Camp
Deanna Graham
Kristin Ross
Rob McIntyre



The play opened on March 7th to 9th but due to unforeseen circumstances the remaining performances had to be postponed.



Exciting News!

We are delighted to announce that

MURDER TONIGHT

will be returning to the Pond Playhouse in the lineup for the 2024-2025 season!

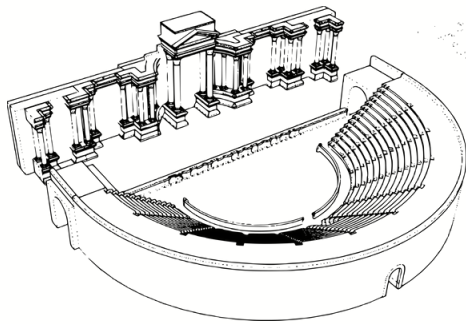
Keep an eye out for upcoming show dates!

Episode 15

Your Surroundings/Our Surroundings!

With Jollimore Days approaching, we are thinking about this community, its surroundings and about those who call this area home. For the purpose of this episode, from the theatrical perspective, I'm thinking about what we surround ourselves with on stage, and how these surroundings influence what you the audience see and hear.

Let's start at the beginning – The originators of theatre (the Ancient Greeks) had very simple surroundings. There was no scenery as such, certainly no overhead racks of lighting instruments (!), so you were either watching in the daytime or by the light of torches at night. Behind the acting area was the 'skene', meant to represent a street, built first of wood but later of stone, so that didn't get moved and replaced after Act One! The onus therefore, from the beginning is on the actor's ability to create the particular surroundings as required – a palace, a storm at sea, a battlefield, a meeting of conspirators in someone's house. The actors all wore the same type of costume, but did wear masks to give an indication of their character – female or male, old, young, malicious, etc. Murals at Pompeii and elsewhere, painted on dining room walls, give us a good picture of what a performance looked like and stage plays were also a popular subject to be painted on vases and ornaments.



This plainness in approach lasts for some time. I've talked before about Shakespeare and his surroundings at the Globe Theatre – Just a bare stage with a canopy overhead which was supported by two columns at the front corners. Like the Greek tradition, this stage had to be whatever was required – A forest, a ship during a storm (very popular), a palace (also popular), a plaza in an Italian city – the possibilities were as endless as the text. The sparseness of the 16th century theatre gradually gives way to an abundance, even surfeit of sets, props, special effects, aerial effects, elaborate costumes, wigs and makeup. Working fountains, clouds, explosions, shipwrecks – it was all there to capture the imagination of the audience. The theatre and museum at Cesky Krumlov in the Czech Republic have some of these elements, including the original scenery pieces, which slide on and off the stage through grooves in the floor.

There is the inevitable reaction to this excess and we seem in the present day to have arrived at a compromise - an acceptance that 'surroundings' in the theatre world can range from stark and bare to some accessories (in the form of furniture, sets, lighting, etc.), to a total recreation of a place or situation. TAG does not have the resources or stage space to create elaborate settings, but it has often been sufficient to add an effect to heighten the atmosphere of a piece – a working sink in the hairdressing salon of *Steel Magnolias* (September, 2013), a riverside effect as Sir Thomas More waits for a boat to ferry him across the Thames in *A Man for All Seasons* (April, 2013), a comfortable interior (with plenty of attention to detail – thank you Cheryl and Brenda!) for *Having Hope at Home* (February, 2018). In *Belles* by Mark Dunn (September, 2007), five sisters talk to each other on the telephone. For our production, the five were each seated on a pod (platform) which resembled the base of an actual telephone. *The Diary of Anne Frank* (April, 2018), a script originally by Frances Goodrich and Albert Hackett in a new adaptation by Wendy Kesselman, reinforced its message through the construction of a limited acting area (designed by Roxanne Smith) to mirror the actual living conditions of the Frank family during their years of hiding. The production played to sold-out houses.



Episode 15

Your Surroundings/Our Surroundings!

Boundaries have been pushed in other ways, particularly in productions where the surroundings almost become a character in the story, having a presence alongside the actors. *Rebecca* (October of 1952 and 2002), is a good example of this. Manderley, Rebecca's home, even though we see only a part of the house on the stage, must make an impression in its role as both a home and a 'shrine' to the first Mrs. de Winter. This was achieved at TAG by having a tall staircase on Stage Right from which Mrs. Danvers, the housekeeper could maintain her watch over the action.

Two productions stand out for me as being particularly successful in creating surroundings which were transforming and carried the audience into a different world. The first, *Enchanted April* (February, 2006) is a play by Matthew Barber, adapted from the novel by Elizabeth von Arnim. The setting for the second act in *Mezzago*, Lombardy is a sunny garden, complete with flowers and garden furniture and ornaments. The set breathed warmth and light and Italian hospitality! Thank you J Carruth, whose Styrofoam pieces worked their magic for us.

I've left my favourite until last – *Dancing at Lughnasa* by Brian Friel, seen at TAG in April, 2005. It's due to the talents of the late Vanessa Walton-Bone and a stellar cast that we were drawn into the daily lives of the Mundy family and their place in the community (and country) which was changing, and not to their advantage.

I hope that I've been able to show you that, as you explore Jollimore during the Spring Festival, and note any changes, you can contrast what you see to the Pond Playhouse, where our illusionary world of theatre changes all the time. The productions may vary from season to season, the Playhouse however isn't going anywhere! Why not drop in on May 27 th (1pm – 3pm) and check out our surroundings and discover just what makes up 'The Pond.'



Judy Reade, TAG's Archivist



There are still several Greek or Roman theatres in existence which are used for their original purpose. Check Wikipedia for the examples at Lemnos and Epidauros in Greece, and at Nîmes in France. You can find plenty of information about our productions on the TAG website. In the Menu bar, click on 'On Stage' and then select 'Photo Galleries' and 'Past Productions.'